

SKYSHL

SS322T Series Optical Time Domain Reflectometer



User Manual

Foreword

Thank you for choosing and using optical time domain reflectometer produced by our company. The Company follows the ISO9000 standard always during production and adheres to the customer-oriented and quality-first principles. Please read carefully the manual, so as to facilitate the operation. We will spare no efforts to meet your requirements, providing you with easy-to-use and reliable devices and considerate after-sales services. We always adhere to the principle of "high quality and thoughtful services", providing customers with satisfactory products and services as well as work convenience and shortcut. The hotline is shown below, and we are looking forward to hear from you.

The manual introduces the application, performance and features, basic principles, usage, maintenance and precautions of the optical time domain reflectometer, facilitating your quick understanding the usage and key points of the meter. To operate the product well, please read the manual carefully.

Mistakes and omissions can hardly be avoided due to time urgency and writer's knowledge limit. Your valuable comments and suggestions are highly welcome! We are sorry for any inconvenience caused due to our errors.

This manual is the first edition of the optical time domain reflectometer user manual. The version number is A.1.

The contents of this manual are subject to change without notice. We reserves the right of interpretation for the contents and the terms used herein.



Note:

The manual copyright belongs to our company., no modification or manipulation can be made to the manual contents by any unit or person without approval of the Company, or any copy or propagation of the manual made for profit. our company. retains the right of pursuing legal responsibilities from any infringer.

Writer

June 27, 2019

Contents

Chapter I Overview	4
Chapter II Main operation interface	10
Chapter III Optical power meter module	11
Chapter IV Optical source module	11
Chapter V Visual fault locator module	11
Chapter VI End face detection module	12
Chapter VII Module of optical time domain reflectometer	12
Chapter VIII Working principles	28
Chapter IX Technical parameters	28
Appendix A Optical output port cleaning	31
Appendix B Technical specification for each OTDR standard module	32

Safety Requirement

The following general safety measures must be taken at any stage of the instrument operation. Failure to take these safety measures or to comply with the warnings and cautions elsewhere in this manual will violate the safety standards for the design, manufacture and use of the instrument. our company. will not be liable for any consequences caused by users' violation of these requirements.

Service environment

For the working environment and storage environment of this instrument, please refer to the description of technical parameters in Chapter IX.

Power supply

For the working power supply requirement of this instrument, please refer to the description of technical parameters in Chapter IX. Before switching on the power supply, make sure that a matching power voltage is set for the instrument and that all safety measures are taken.

Do not use this instrument in explosive or flammable environment.

Do not use this instrument in the presence of flammable gases or fumes.

Do not disassemble any part of the instrument without permission.

Do not disassemble any parts of the instrument except those parts which are allowed to be replaced by the user as stated in this manual. Replacement parts and internal adjustment can only be carried out by our company. or by its authorized maintenance personnel.

Safety terms in this manual

Warning! : Alert the user to a process, operation, or similar situation. Failure to operate properly or follow rules may result in personal injury or instrument damage.

Note! : Alert the user to a process, operation, or similar situation. Failure to operate properly or follow the rules may result in partial or total damage to the instrument.

Instruction! : Information useful for instrument use and maintenance.

Chapter I Overview

1 Overview

This manual is applicable to optical time domain reflectometer. The optical time domain reflectometer is a multifunctional test instrument designed for FTTx network. It is mainly used to measure the length, transmission loss, joint loss and other physical properties of optical fiber, and to locate the event point and fault point in the optical fiber line. It is widely used for engineering construction, maintenance test and emergency repair in optical fiber communication system, as well as fiber optic cable development and production test.

In addition to OTDR function, OTDR can also be equipped with optical power meter, light source, visual fault location (VFL) and vibration detection function.

Main functions and features of the optical time domain reflectometer:

- 0.8m ultra-short event blind area, easy to test optical fiber jumper.
- Minimum 2.5cm sampling resolution for accurately locating event points.
- **49 dB large dynamic range, 256k data sampling point, capable for long-distance multi-branch communication network test.**
- Bidirectional analysis and macro - bending analysis function.
- PON online testing function.
- Single and multi - module integrated test function.
- Advanced anti - reflection LCD, ensuring clear and visible display interface in field environment.
- A variety of test modes, touch screen and shortcut key operation.
- Automatic communication fiber monitoring function.
- Remote control function.
- Dual USB interface function, external USB disk, and printer.
- Bellcore GR196 and SR-4731 file formats supported.
- Multilingual operation interface.
- Built-in optional visual red light fault location (VFL), optical power meter, light source and end face detection function modules.
- OTDR optical output connector type can be changed at will, ensuring easy endface cleaning.

2 Product Composition

The basic components of the optical time domain reflectometer are shown in Table 1-1 and 1-2.

Table 1-1 Standard configuration of optical time domain reflectometer

No.	Name	Remarks
1	mainframe module	Display control module
2	Module of optical time domain reflectometer	OTDR measuring module
3	Li-ion battery pack	Over 70Wh (built-in)
3	Power cord assembly	Input voltage: 100-240V, 50-60Hz, 2.0A Output voltage 15V, output current 4A
4	User Manual	
5	Product certification	
6	Special portable soft pack	

Table 1-2 Options of optical time domain reflectometer

No.	Name	Remarks
1	mainframe module	Display control module
2	Module of optical time domain reflectometer	OTDR measuring module
3	Li-ion battery pack	Over 70Wh (built-in)
3	Power cord assembly	Input voltage: 100-240V, 50-60Hz, 2.0A Output voltage 15V, output current 4A
4	User Manual	
5	Product certification	
6	Special portable soft pack	
3	Power cord assembly	Input voltage: 100-240V, 50-60Hz, 2.0A Output voltage 15V, output current 4A
4	User Manual	
5	Product certification	
6	Special portable soft pack	

3 Warnings for instrument operation

3.1 External DC power

External DC power supply must meet the following requirements: 14V ~ 20V and greater than 1.5A; polarity: center is positive. Using too high a voltage will damage the instrument.

3.2 Internal battery

- (1) The internal battery is the dedicated lithium ion battery. The use of other batteries will damage the instrument and endanger the user's personal safety.
- (2) For safety reasons, do not dismantle the battery pack, so as to avoid short circuit; do not slam the battery or put the battery into or close to the source of fire and strong heat, so as to avoid explosion.

3.3 Laser safety

- (1) The safety level of the laser used in this instrument is: CLASS1 LASER PRODUCT : 21 CFR 1040.10 or CLASS 3A LASER PRODUCT : IEC 60825-1:Ed.2:2001
- (2) Although the output intensity of the laser used in this instrument is within the safe range, it may still damage the eyesight. Therefore, the output of the laser should be avoided to shoot directly into the eye. Do not look directly at the optical output connector of the OTDR and do not look directly at the end of the optical fiber during testing. When the instrument's VFL function is on, do not look directly at the output port of the VFL light source or at the end of the optical fiber connected to the VFL output.

3.4 OTDR operation

Never connect optical fiber with any optical signal to the test port of OTDR. Otherwise, it will lead to inaccurate measurement results and even permanent damage to the instrument. Please ensure that all optical fibers tested by this instrument are in a state of no signal.

4 Precautions for instrument operation

4.1 AC/DC adapter

Please use the adapter provided by our company. to power the instrument. Using other adapters may cause damage to the instrument.

4.2 Internal battery

- (1) In order to give full play to the performance of the battery, at the beginning of using the instrument, the internal battery should be used for power supply until the battery is exhausted, and then the battery should be charged for 2-3 times.
- (2) If you need to use the external power supply for a long time, please take out the internal battery and store it properly. Charging a battery for too long can reduce battery life and even cause battery damage.
- (3) When the battery is stored for a long time (more than 6 months), the temperature range shall be $-20^{\circ}\text{C} \sim 45^{\circ}\text{C}$. For short-term storage (storage time less than or equal to 6 months), the temperature range of the battery shall be $-20^{\circ}\text{C} \sim 60^{\circ}\text{C}$.
- (4) The charging temperature range of the battery in the instrument is $5^{\circ}\text{C} \sim 40^{\circ}\text{C}$. When the ambient temperature is too high or too low, the charging will automatically terminate, which will lead to the battery charging is not satisfied.

4.3 LCD display screen

- (1) Do not use sharp objects to click on the LCD screen, do not impact the LCD screen with force. Otherwise, the LCD screen will be damaged.
- (2) Do not drip or splash organic solvents or pollutants on the LCD screen, such as acetone, oil, antifreeze, ointment, or it will cause the LCD screen to work abnormally.
- (3) Wipe and clean the LCD screen with a silk cloth or a soft fabric. Do not wipe the LCD screen with organic solvent, otherwise the LCD screen may be damaged.

4.4 OTDR operation

- (1) The standard optical interface of this product is of FC/UPC type. When connecting the tested fiber, please check whether the fiber connector type matches before connecting. Otherwise, the optical interface will be damaged and the test curve cannot be normal.
- (2) The optical output connector of the instrument has a precise and fragile ceramic positioning core inside. When the optical fiber is connected, please make sure that the optical fiber plug is inserted gently in parallel and tighten after aligning with the positioning pin.
- (3) When using this instrument for measurement, it is necessary to keep the inside of the optical output connector of the instrument and the end face of the optical output connector of the instrument clean, so as to avoid contamination of the optical output connector by ointment and other pollutants. Otherwise, the error of the instrument measurement will be caused, and the instrument may be unable to test optical fiber in serious cases.
- (4) If possible, point the end of the fiber to a non-reflective object during instrument testing.

4.5 Software upgrading for the optical time domain reflectometer

- 1) Upgrade U disk format to FAT format; other format may not be recognize by the system.
- 2) Do not pull out the U disk during the software upgrade of the optical time domain reflectometer, otherwise the system will not work normally.
- 3) Regardless of the success or failure of the optical time domain reflectometer upgrade, please restart it, otherwise it may not work properly.

5 Maintenance

- (1) Please use original packing materials when this instrument is transported to avoid severe shock and vibration.
- (2) After removing the packing case of the instrument, please carefully check and ensure that the model of the instrument is optical time domain reflectometer. After confirming there is no obvious damage on the surface of the instrument with complete accessories, the instrument can be used.
- (3) When the instrument is stored, the ambient temperature range should be $-40^{\circ}\text{C} \sim 70^{\circ}\text{C}$ (for the storage temperature range of the battery, please refer to the above internal battery description). Keep it ventilated and dry without direct sunlight. When the instrument is not in use for a long time, please take out the battery inside the instrument and electrify it regularly for inspection. At the same time, charge and discharge the battery once every 3 months.

- (4) In order to extend the battery life, when the instrument is not used for a long time, the battery should be charged and discharged once every 3 months. Please discharge the battery thoroughly first, and then charge the battery again.

6 Calibration requirement

The validity of technical parameters is related to the operating environment of the instrument. The period of calibration can be extended or shortened according to the operation frequency of the instrument, the environment in which the instrument operates and the maintenance of the instrument. Users should determine the appropriate calibration period based on actual needs.

Under normal use of the instrument, it is recommended to calibrate the optical time domain reflectometer once a year. For specific matters, please call the service telephone for consultation.

7 Instrument warranty and repair

- (1) The warranty of the instrument (except the battery and the following consumables) is 36 months (unless specially required in the purchase contract), and that of the battery is 3 months. Products offered during promotional activities are not covered by the warranty.
- (2) The optical output connector and other components of the instrument are consumables, which are not covered by the warranty.
- (3) Instrument damage or performance degradation Due to force majeure and human factors will not be covered by the warranty.
- (4) As the instrument is used for a period of time, the battery performance will decline, which is normal battery loss. This situation is not covered by the warranty.
- (5) The maintenance of the instrument shall be carried out by our company. or its designated and authorized maintenance unit. Any other unit or individual disassembling and repairing the instrument is illegal, and the instrument will lose its warranty qualification. At the same time, our company. reserves the right to pursue legal liability for violators.
- (6) Once the instrument is disassembled without authorization, it will automatically lose its warranty. Removal of fastening screws or seals will automatically disqualify the instrument from warranty.

8 Instrument panel description

8.1 Instrument front panel

The front panel of the optical time domain reflectometer is shown in Figure 1-1:



Figure 1-1 Front panel of optical time domain reflectometer

8.2 Instrument side plate

The side plate of the optical time domain reflectometer is shown in Figure 1-2:



Figure 1-2 Side plate of optical time domain reflectometer

Chapter II Main operation interface

The optical time domain reflectometer can be equipped with optional functions such as optical power meter, light source, visual fault location (VFL) and end face detection. Select the main menu under the system menu, and the operation function module selection interface shown in Figure 2-1 will appear.

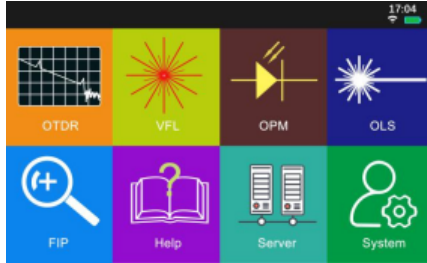


Figure 2-1 Schematic diagram of the main operation interface

Click any of the six buttons of [OTDR], [Optical power meter], [Optical source], [VFL], [End face detection] and [Help] in the interface to enter the corresponding module operation interface and realize the corresponding functions.

Click the [system setting] button to enter the system setting interface, and carry out general settings and network settings respectively.

General Settings include language Settings, screen brightness settings, time settings, system information, and system upgrades, as shown in Figure 2-2.



Figure 2-2 Schematic diagram of general setting interface

Network Settings include network settings, WIFI scanning and connection, Internet of Things connection and bluetooth connection, as shown in Figure 2-3.

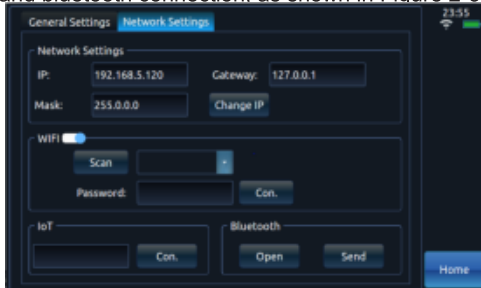
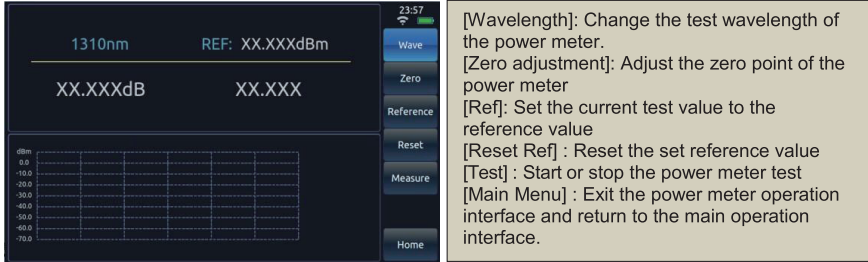


Figure 2-3 Schematic diagram of network setup interface

Chapter III Optical power meter module

If the instrument you purchased is equipped with the optical power meter function, click the [Optical power meter] button in Figure 2-1 to enter the operation interface of the optical power meter, as shown in Figure 3-1.

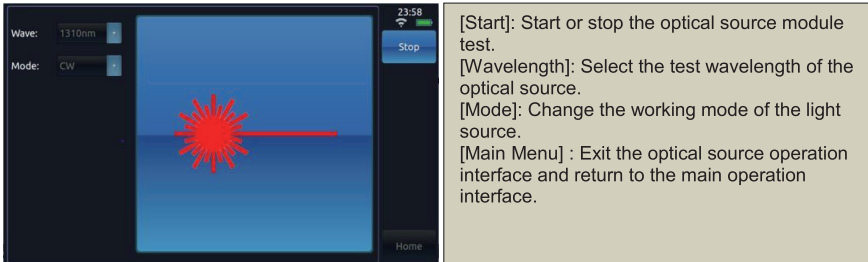


[Wavelength]: Change the test wavelength of the power meter.
 [Zero adjustment]: Adjust the zero point of the power meter
 [Ref]: Set the current test value to the reference value
 [Reset Ref] : Reset the set reference value
 [Test] : Start or stop the power meter test
 [Main Menu] : Exit the power meter operation interface and return to the main operation interface.

Figure 3-1 Operation interface and description of optical power meter module

Chapter IV Optical source module

If the instrument you purchased is equipped with optical source function, click the [Optical source] button in Figure 2-1 to enter the optical source operation interface, as shown in Figure 4-1.

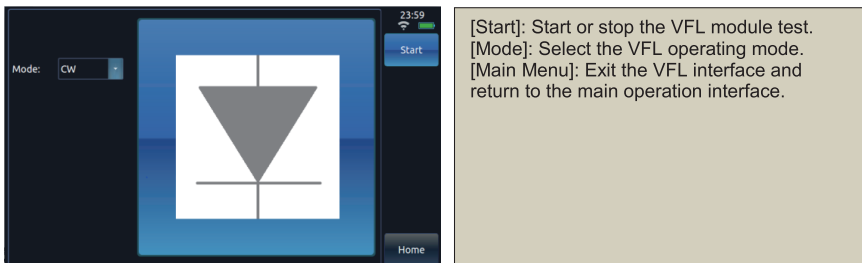


[Start]: Start or stop the optical source module test.
 [Wavelength]: Select the test wavelength of the optical source.
 [Mode]: Change the working mode of the light source.
 [Main Menu] : Exit the optical source operation interface and return to the main operation interface.

Figure 4-1 Operation interface and description of optical source module

Chapter V Visual fault locator module

If the instrument you purchased is equipped with the function of visual fault locator, click the [VFL] button in Figure 2-1 to enter the operation interface of visual fault locator, as shown in Figure 5-1.



[Start]: Start or stop the VFL module test.
 [Mode]: Select the VFL operating mode.
 [Main Menu]: Exit the VFL interface and return to the main operation interface.

Figure 5-1 Visual fault locator module operation interface and description

Chapter VI End face detection module

If the instrument you purchased is equipped with the end face detection function, click the "End Face Detection" button in Figure 2-1 to enter the end face detection operation interface, as shown in Figure 6-1.

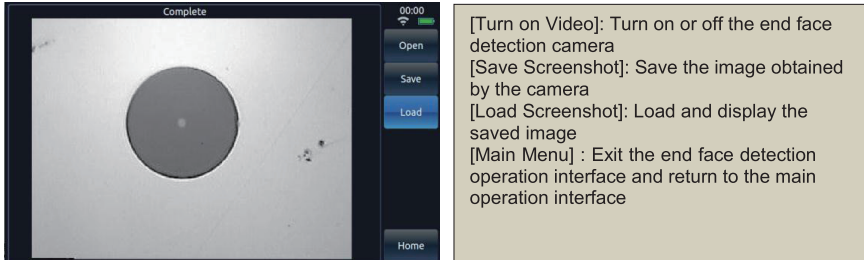


Figure 6-1 Operation interface and description of end face detection module

Chapter VII Module of optical time domain reflectometer

1 Main operation window description

Click the [OTDR] button in Figure 2-1 to enter the operation interface of the optical time domain reflectometer. The Testing interface of the optical time domain reflectometer is shown in Figure 7-1:



Figure 7-1 Operation interface of optical time domain reflectometer

- 1) It displays the current system time, battery power and WiFi connection.
- 2) Test results display area. The test results are calculated based on the current marker position. Average loss: the loss between marker A and B and the average loss of the optical fiber segment where the cursors A and B are located; connection loss: four cursors will be displayed in the main interface of OTDR, and the connection loss of the connection point where marker A is displayed in the test results; reflection loss: the test result displayed in the main interface of OTDR is the reflection loss of the optical fiber reflection peak where markers A and B are.

- 3) Display small waveforms globally. Always display a global overview of the test curve waveform.
- 4) Reference origin.
- 5) Current active marker. The active marker is red, the position of the marker can be changed by pressing a button or clicking the touch screen, and the other marker is blue. The active marker can be set iteratively between the on-screen markers by pressing a key.
- 6) The distance between the marker position and the reference point. The position between the two markers.
- 7) Menu bar.
- 8) Test conditions display column. Display the current test range, wavelength, pulse width, test mode and other test conditions.
- 9) The filename and saving time of the currently read file. If the current test curve is the one saved in the file read, the file name read and the time saved are shown here.
- 10) Color indication of current test curve. This icon table shows the line color of the test curve with the current sequence number.
- 11) The scale in the vertical direction.
- 12) The scale value in the horizontal direction.

Instruction!

- ✧ The distance of the current active marker and the distance of the event points in the event table are calculated from the reference origin. The distance displayed on the left of the reference origin is negative, while the distance displayed on the right is positive.
- ✧ When the instrument is manufactured, the default reference point is the test port of OTDR, that is, the test origin.
- ✧ If the reference origin is set, the instrument will automatically save, and the saved reference origin will be automatically called out after the next boot.
- ✧ The instrument is allowed to display four test curves at the same time, respectively represented by curves 1, 2, 3 and 4:
- ✧ The analysis, movement and calculation of the curve only focus on the current active curve.
- ✧ The line color of the current curve is the same as that of the icon on the button.
- ✧ Through the curve switch button in the menu bar, you can switch between curves 1, 2, 3 and 4.
- ✧ Only curves with the same test range can be displayed simultaneously.

2 Event list window description

Under the main operation interface shown in Figure 7-1, click the [Analysis] button to analyze the current trajectory curve and display the event list. The schematic diagram of the event list window is shown in Figure 7-2.



Figure 7-2 Analysis interface of optical time domain reflectometer

Each item in the event list is explained as follows (take the distance unit km as an example) :

1) Event type:

- ┆: It indicates that this event point may be the starting point of the fiber.
- ┘: It indicates that this event point is a descending event point.
- ┘: It indicates that this event point is an ascending event point.
- ┆: It indicates that this event point is a reflection event point.
- ┆: It indicates that this event point may be the end of the fiber.

2) No.: The number of the current event point.

3) Distance (km): The distance from the current event point to the reference origin.

4) Attenuation (dB/km) : Average loss of the fiber before the current event point.

5) Loss (dB): Connection loss measured at the current event point. * It indicates that the current measured connection loss is greater than the set connection loss passage threshold.

6) Reflection (dB): Reflection loss measured at the current event point. * It indicates that the current measured reflection loss is greater than the set reflection loss passing threshold.

7) Total (dB): Total loss of the fiber segment between the current event point and the reference point.

Instruction!

- ✧ During data analysis, there will be three kinds of threshold setting: loss analysis threshold, loss passing threshold (including the threshold of joint loss and reflection loss), and optical fiber terminal threshold.
- ✧ In the event list, only the event points whose joint loss is greater than the set loss analysis threshold will be displayed, and the event points whose joint loss is less than the set loss analysis threshold will be ignored.

- ❖ A value marked with * indicates that the value is greater than the set loss passage threshold.
- ❖ If the calculated joint loss is greater than the set terminal threshold, this point is taken as the end of the fiber, and all subsequent event points will be ignored and will no longer be displayed.

3 Graphical analysis window description

After selecting graphical analysis, click the [Switch Mode] button to perform graphical analysis of the current trajectory curve and display the graphical analysis interface. The schematic diagram of the graphical analysis window is shown in Figure 7-3.

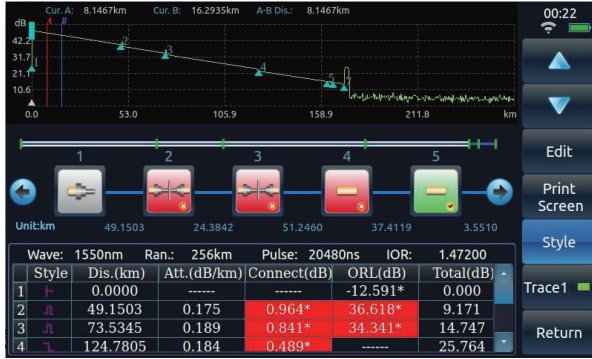


Fig. 7-3 Graphical analysis interface I

Click the [Switch Mode] button again, and the interface state will be switched, as shown in Figure 7-4.



Fig. 7-4 Graphical analysis interface II

The meaning of each figure in the graphical analysis window is explained as follows:



: It indicates that this event point may be the starting point of the fiber.



: It indicates that this event point may be the end of the fiber.



: The junction satisfies the passing condition.



: The connection loss at the junction exceeds the threshold and the passing condition is not met.



: The connector meets the passing condition.



: The connection loss or reflection loss at the connector exceeds the threshold and does not meet the passing condition.



: There is a macro bend.

4 Main menu structure and function overview

The main menu bar is displayed by default in the main operation window, which contains seven menu item buttons, as shown in Figure 7-5.

Average	Control OTDR to average progressively the loss curve of the test with the set average time
Real-Time	Control OTDR to refresh test or stop test in real time
Setup	Enter the parameter setting sub-menu to realize OTDR test condition setting
Analysis	Analyze the current test curve and give a list of events
File	Enter the file operations sub-menu. Such functions as reading files, saving files and so on can be realized
Trace1	Switch between display curves (curve 1 in green; Curve 2 in yellow; Curve 3 in orange; Curve 4 in blue)
Home	Return to the main instrument menu for module selection, system Settings, etc

Figure 7-5 Menu buttons and main functions of main menu bar of the OTDR

The functions of each button on the menu bar are detailed as follows:

- 1) [Average]: This button is used to control the progressive average of the average time set by OTDR to the test loss curve. When the test is finished, the content displayed on this button will automatically change from [Stop] to [Average], and OTDR will stop the test.
- 2) [Real-time] : This button is used to control OTDR to refresh test or stop test in real time, only available in manual test mode. In the manual test mode, click the button, and the content displayed on the button changes to [Stop]. At this time, OTDR will refresh the tested fiber loss curve in real time. Click this button again, the content displayed on the button changes back to [Real-time], and OTDR stops testing.
- 3) [Setting] : Enter the parameter setting sub-menu to realize OTDR test condition setting, reference origin setting, optical cable information setting and other functions.
- 4) [Analysis] : Analyze the current test curve and give a list of events. If the event point is not found, a prompt is given.
- 5) [File] : Enter the file operation sub-menu. It can read files, save files, delete files, transfer files, print files and realize other functions.
- 6) [Curve 1] : Display the curve selection window, in which you can select the curve serial number to make the current active curve switch between curve 1, curve 2, curve 3 and curve 4. Curve 1 is green; Curve 2 is yellow; Curve 3 is orange; Curve 4 is blue.
- 7) [Main menu]: Return to the main menu of the instrument for module selection and system setting.

5 Application method

Before testing the optical fiber link, first set the OTDR test mode and various test parameters. Click the [Set] button in Figure 7-5, and then click the [test conditions] button to set the test conditions, as shown in Figure 7-6.



Figure 7-6 Test condition setting interface

Note!

- ✧ Before starting the test, it is necessary to ensure that the tested fiber does not contain any active signal; otherwise it may cause permanent damage to the instrument.
- ✧ The OTDR module of the instrument has two optical output ports. Please pay attention to the OTDR module number selected by the instrument. During the test, please connect the tested fiber to the correct test port; otherwise it may lead to the failure of obtaining accurate test data.

Instruction!

- ✧ When the test mode is selected as automatic test, the test is automatically analyzed and a list of events is given when the test stops.
- ✧ After curve analysis:

Event points where the connection loss is greater than the loss analysis threshold will be marked. Event points where the connection loss is less than the loss analysis threshold are automatically ignored.

In the event list, connection loss and reflection loss greater than the set loss through the threshold will be marked with “*”.

When the connection loss of the event point is greater than the threshold value of the fiber break point, the event point is considered as the fiber break point. All events after this event point are ignored and not shown in the list.

Click the [Set] button in Figure 7-5, and then click the [Link Definition] button to set the link definition, as shown in Figure 7-7.

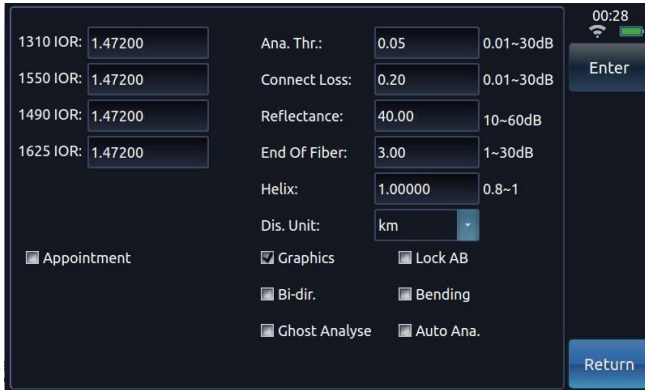


Figure 7-7 Link definition setting interface

5.1 Testing fiber link

The operation steps are as follows:

- 1) Select the test wavelength.
- 2) Set test conditions such as test wavelength mode.
- 3) Clean the fiber to be tested.
- 4) Connect the tested fiber to the corresponding OTDR optical input port.
- 5) Press the test key to obtain the waveform curve of the tested fiber.
- 6) After the test:
 - If [Auto Test] mode or [Auto Analysis after Sampling] is selected, the instrument will automatically analyze the test curve, mark the event points according to the set loss analysis threshold, and give the event list.
 - Otherwise, click the [Analysis] button in the main menu bar. The instrument will analyze the test curve, mark the event points according to the set loss analysis threshold, and give the event list.
- 7) After curve analysis, test results can be viewed in the event list.

5.2 Test mode of OTDR

OTDR has two test modes: automatic test and manual test.

- 1) Automatic test :

When OTDR test mode is set to automatic test: After the test key is pressed, OTDR will automatically adjust the test conditions to test the tested fiber link. After the test is completed, curve analysis will be performed automatically, and the test curve and event list will be displayed in the main operation window.

- 2) Manual test:

When OTDR test mode is set to manual test: After clicking the [Real-time] button in the main menu bar (at this time, the content on the [Real-time] menu button changes to [Stop]), OTDR will conduct real-time scanning test on the tested fiber link according to the currently set test conditions, and the test curve in the main operation window will be constantly refreshed. When OTDR test mode is set to manual test: After pressing the test key or clicking the [Average] button in the main

menu bar (at this time, the content on the [Average] menu button changes to [Stop]), and OTDR will average the tested fiber link according to the set test conditions. The test curves in the main operation window will be averaged continuously until the average time displayed on the interface equals the set average time, and OTDR will stop testing.

Instruction!

- ◇ Manual test mode carries out single real-time or average test according to manually or automatically set test conditions (i.e. range, pulse width and attenuation).
- ◇ In the automatic test mode, the instrument will automatically set and adjust the test conditions according to the condition of the tested fiber.
- ◇ Real-time test under manual test mode can observe the fiber line under test in real time.
- ◇ The average test under manual test mode can obtain the test curve with higher SNR, which is more smooth, and conducive to data analysis, with more accurate test results.
- ◇ In the automatic test mode, after the test, the instrument will analyze the test curve and give a list of events. In other test modes, only when the [Post-test analysis] function is selected can the instrument automatically analyze the test curve after stopping the test. Otherwise, it must click the [Analysis] button in the main menu bar to analyze the curve and then give a list of events.

5.3 Test parameter of OTDR

OTDR test parameters include: wavelength, range, pulse width, average time, refractive index, fiber optic cable correction factor, etc.

1) Wavelength:

- It is used to set the test wavelength of OTDR. The number of wavelengths allowed to be selected by OTDR is determined by the module of the instrument, and up to 4 wavelengths can be selected.
- Multiple wavelengths are allowed to be selected simultaneously in average test and automatic test mode. During the test, the instrument will test at each selected wavelength in turn until all the selected wavelengths have been tested. The instrument is allowed to select up to four wavelengths at the same time.
- When the module equipped with the instrument includes both single and multi-mode modules, please pay attention to connect the tested fiber to the corresponding test interface to ensure the correct test curve.

2) Measuring range (km) :

- It is used to set the scan curve range. The range of the optical time domain reflectometer is divided into the following stages: 400m, 800m, 1.6km, 3.2km, 8km, 16km, 32km, 64km, 128km, 256km and 512km (the maximum optional range is related to the selected module).

Instruction!

The measuring range must be larger than the length of the fiber under test (preferably larger than twice the length of the fiber under test)

3) Pulse width (ns) :

- It is used to set the width of the laser pulse to be used in the test. The larger pulse width can be used to test the longer fiber. The signal-to-noise ratio of the test curve is better, the curve is smoother, but the resolution is poor. The smaller pulse width has a higher resolution, but the measurement distance is shorter, and the signal-to-noise ratio the test curve is poor.

Instruction!

The pulse width that can be set depends on the selected test range

4) Average time:

- It is used to set the maximum average time for average testing and automated testing. In the average test mode, the values are 15, 30, 45, 60, 90, 120 and 180. In the auto test mode, the values are 15, 30, 45, 60, 90, 120 and 180.

Instruction!

- ◇ The longer the average time, the smoother the test curve (i.e., the higher the SNR, especially useful for testing long distance optical fibers).
- ◇ The increased SNR of the test curve is beneficial to OTDR detection of smaller event points.
- ◇ In automatic test mode, more average times will affect the speed of automatic test.

5) Refractive index:

- The refractive index of optical fiber or cable can be obtained from the manufacturer. The refractive index can be set to 1.00000 ~ 2.00000.

Note!

If the refractive index is not set accurately, the length of the fiber measured is also inaccurate.

6) Cable correction:

- The fiber optic cable correction factor is inserted to take into account the error between the length of the fiber and the length of the fiber. It is available from fiber optic cable manufacturers. Its value can be set to 0.80000 to 1.00000. The default value is 1.00000.

Note!

If cable correction is not accurate, the cable length measured is not accurate.

7) Lock markers A and B:

- When this option is selected, the distance between marker A and marker B is locked. When either marker is moved, the two markers move together, keeping the distance between them the same. If this is not selected, when one marker is moved, the other one remains in its original position.

8) High resolution test:

- When this option is selected, the maximum number of sampling points of the instrument is increased to 256k, which enhances the resolution of events occurring within a short distance in the fiber link under test.

5.4 Test items of OTDR

OTDR test items can be selected as follows: average loss, connection loss and reflection loss. Click the arrow control to switch test items. It is shown in Fig. 7-8.

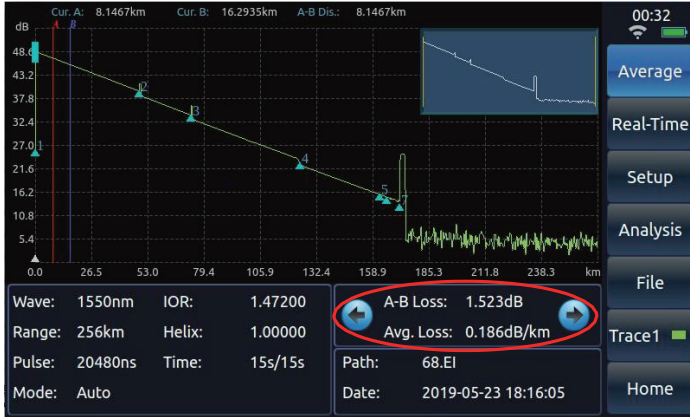


Figure 7-8 OTDR test items

1) Average loss

- At this time, the test results displayed in the OTDR main interface are as follows: loss between A and B, distance between the markers A and B, and average loss between the optical fiber segment where markers A and B are located.

2) Connection loss:

- At this time, four markers will be displayed in the main interface of OTDR, and the connection loss of the connection point where marker A is shown in the test results.

3) Reflection loss:

- At this time, the test results displayed in the main interface of OTDR are the reflection loss of the optical fiber reflection peak where markers A and B are, and the distance between two points A and B.

Instruction!

- ◇ When testing the average loss, markers A and B must be set on the linear section of the fiber curve, otherwise the calculated average loss will have a large error.
- ◇ When testing connection loss, four markers appear in order: marker a, marker A, marker B, and marker b. Set marker a and marker A on the linear segment of the fiber curve before the connection point. Marker A is set near the join point. Set marker B and marker b on the linear segment of the fiber curve after the connection point.
- ◇ When testing the reflection loss, set marker A in front of the reflection peak to be tested and near the take-off point of the reflection peak. Set marker B on the top of the reflection peak to be tested.

5.5 Event analysis and passing threshold

On the OTDR test condition setting interface, you can set the event analysis and passing threshold.

- 1) Loss analysis threshold:
 - When analyzing the test curve data and the calculated connection loss of the event point is greater than the loss analysis threshold, the event point will be marked. Otherwise it will be automatically ignored.
- 2) Passing threshold of joint loss:
 - In the event list, when the calculated event point connection loss is greater than the set connection loss passing threshold, the connection loss value will be marked with “*”.
- 3) Reflection loss passing threshold:
 - In the event list, when the calculated reflection loss at the event point is greater than the set reflection loss passing threshold, the reflection loss value will be marked with “*”.
- 4) Fiber terminal threshold:
 - When the connection loss of the event point is greater than the threshold value of the fiber terminal, the event point is considered as the fiber terminal. All events after this event point are ignored and not shown in the list.

5.6 Two-way analysis

To realize the bidirectional test function, the operation steps are as follows:

- 1) Click [Two-way Analysis] on the link definition setting interface, as shown in Figure 7-7, and click [OK].
- 2) Read one of the curves in the file list that requires two-way analysis (curve 1);
- 3) Click [Curve] in the main menu bar, tick [Curve 2] in the curve selection box, and click [OK];
- 4) Read another curve in the file list that requires two-way analysis (curve 2);
- 5) Click the [Analysis] button to get the Two-way analysis results, as shown in Figure 7-9.

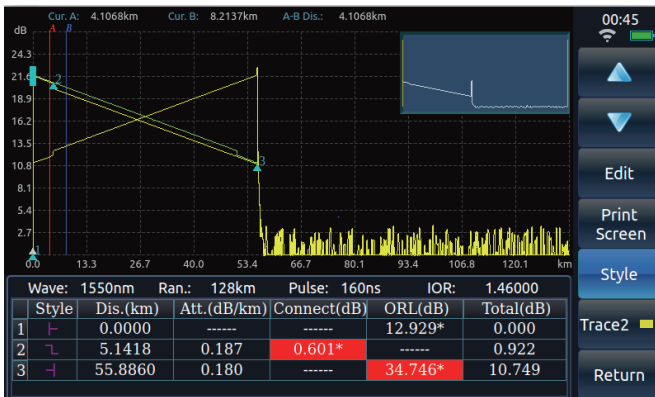


Figure 7-9 Two-way test analysis

5.7 Macro bending analysis

To realize the macro bending analysis function, the operation steps are as follows:

- 1) Click [Macro BendingAnalysis] on the link definition setting interface, as shown in Figure 7-7, and click [OK].
- 2) Read one of the curves in the file list that requires macro bending analysis (curve 1);
- 3) Click [Curve] in the main menu bar, tick [Curve 2] in the curve selection box, and click [OK];
- 4) Read another curve in the file list that requires macro bending analysis (curve 2);
- 5) Click the Analysis button to get the macro bending analysis results.

5.8 Analysis of unreal peaks

To realize the unreal peak analysis function, the operation steps are as follows:

- 1) Click [Unreal Peak Analysis] on the link definition setting interface, as shown in Figure 7-7, and click [OK].
- 2) Read the curve in the file list that requires unreal peak analysis;
- 3) Click the [Analysis] button to get the unreal peak analysis results, as shown in Figures 7-10&7-11.



Fig. 7-10 Checking the analysis result before unreal peak analysis

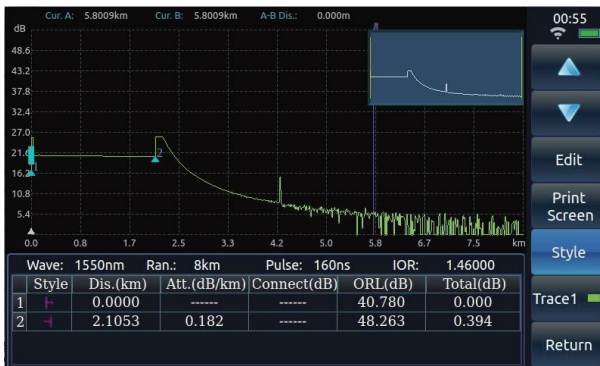


Fig. 7-11 Checking the analysis result after unreal peak analysis

5.9 Read file

Click the [File] button in the main menu bar of Figure 7-5 to enter the sub-menu bar, as shown in Figure 7-12.

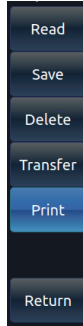


Figure 7-12 File manage submenu bar

Click the [Read] button to enter the file reading operation window, as shown in Figure 7-13.

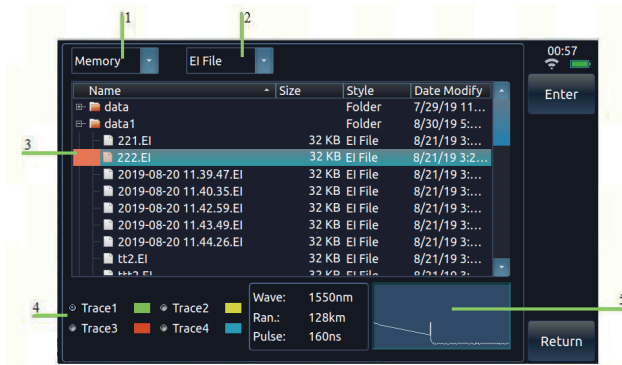


Figure 7-13 File reading operation window

- 1) Reading path: Memory, U disk and SD card can be selected.
- 2) File format: EI file or SOR file can be selected.
- 3) File list: The list shows the curve files that conform to the file format stored under the current path.
- 4) Curve selection: Select the current curve to be displayed as curve 1, 2, 3 or 4.
- 5) Curve preview area: Display the test curve saved in the file selected by the current cursor bar via preview.

Select the file to be opened and click [OK] button to read and display the file.

5.10 Save file

Click the [Save] button in the sub-menu bar of file management in Figure 7-9 to enter the file saving operation window, as shown in Figure 7-14.

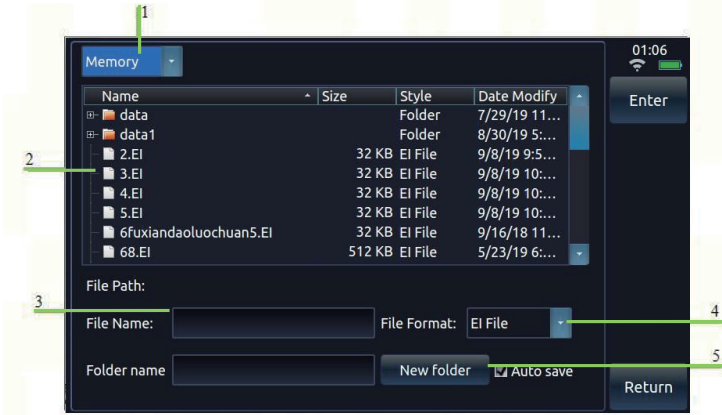


Figure 7-14 File saving operation window

- 1) Saving path: Memory, U disk and SD card can be selected.
- 2) File list: The list shows the curve files that conform to the file format stored under the current path.
- 3) File name: A file name can be entered. If the edit box is empty, the default file name is the current time.
- 4) Saving type: EI file or SOR file can be selected.
- 5) New folder: Enter the folder name and click the [New Folder] button to create a new folder in the corresponding location.

Enter the file name, select the type of file to save, and click the [OK] button to save the file to the appropriate location.

5.11 Common failures and troubleshooting

The following are the possible failures of the instrument and the solutions:

Table 8-1 Failures and troubleshooting

Failures	Cause	Troubleshooting
Instrument cannot be started	The battery is dead.	Charge the battery.
	No external power supply	Supply power with an AC/DC adapter.
Keys do not respond	Check whether there is a button that keeps pressed	Make sure that no key is pressed down all the time.
The fiber length measured is inaccurate	a. Refractive index of Optical fiber is not set accurately b. Cable correction factor is not set accurately	a. Set the refractive index of the fiber to the index specified by the fiber manufacturer. b. Set the cable correction factor to 1.0000 or the cable correction factor specified by cable manufacturer.

The average loss of fiber measured is not accurate	<p>a. The fiber length error measured is too large</p> <p>b. The front tail of the test curve is too long</p>	<p>a. Refer to the previous item to measure the fiber length accurately.</p> <p>b. After cleaning the connector of the fiber under test or adding a little matching fluid, retest the curve.</p>
There is no test waveform on the screen, only the front reflection peak, or the front reflection peak has a long tail.	The end face of optical fiber is polluted;	Wipe the end face of the fiber clean with anhydrous ethanol.
	The internal fiber end face of the optical output connector of the instrument is contaminated	Remove the connector at the optical output end and wipe the fiber end face clean with anhydrous ethanol.
	The ceramic core in the optical output connector is damaged, cracked or broken.	Change the flange.
	Fiber connector type mismatch	The end face type of the fiber connector being tested must match the end face type in the OTDR optical output connector. Otherwise, a connection must be made with a connection wire.

5.12 Reasons for failure of curve test and analysis

If the result of curve test and analysis is quite different from the expected result, or the expected result does not appear, it may be caused by one of the following reasons:

1) The test curve of the fiber was not obtained

If the test curve only has the front end reflection peak, and there is no linear curve reflecting the characteristics of the fiber, please check:

- Whether the end face type of the tested fiber is consistent with the end face type of the OTDR optical output port.
- Whether the end face of the fiber is contaminated.
- Whether the optical output flange of OTDR is cracked.
- Use the VFL function to check whether the near end of the fiber link under test has high loss.

Instruction!

If the fiber link you tested is very short, such as less than 100m, the following test method and test conditions are recommended:

- ◇ Please set: average test mode, measuring range of less than 800m, pulse width of less than 80ns, attenuation of 15dB or 20dB, and a certain average time.
- ◇ If 15dB attenuation is set, a better SNR test curve can be obtained, which is conducive to curve analysis. A smaller test blind area can be obtained by setting 20dB attenuation, but the signal-to-noise ratio of the curve is relatively low, so a larger average time is needed to obtain a curve with a higher signal-to-noise ratio.

2) The near end of the test curve showed more serious trailing phenomenon

If a relatively serious trailing phenomenon is observed on the falling edge of the reflection peak at the near end of the test curve, please try the following:

- Please dip a cotton wool ball in an appropriate amount of anhydrous ethanol to clean the end face of the tested fiber and that of the optical output end connector of the OTDR.
- Re-test the curve with a smaller pulse width (note that the average test is selected and the average time is set).
- Re-test the curve with a large attenuation at the current pulse width (note that the average test mode is selected and the average time is set).

3) The event points in the test curve are too close together

If an adjacent event point is found missing, try the following:

- Re-test the curve with a smaller pulse width (note that the average test is selected and the average time is set).
- Please set a certain average time and use the average test method to improve the signal-to-noise ratio of the curve.

4) The SNR of the test curve is poor

If the signal-noise ratio of the test curve is poor, the accuracy of the curve analysis will be affected. In this case, try the following:

- In the automatic test or average test mode, please increase the average time value appropriately.
- Please use a larger pulse width to retest after setting the appropriate test range under the average test mode.

5) The OTDR test parameters set are incorrect

If there is a big difference between the measured fiber length and the actual value, please check:

- Whether the refractive index value and optical fiber correction coefficient value set are consistent with the nominal value of the fiber or optical fiber measured.
- If the refractive index is not consistent, the measured length of the fiber will be seriously affected.

Chapter VIII Working principles

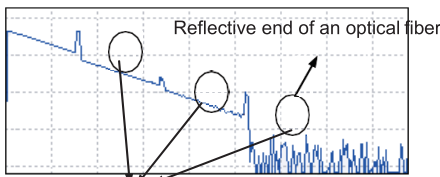
1 Working principles

When light is transmitted in optical fiber, Rayleigh scattering is caused by slight fluctuation of refractive index of optical fiber, and Fresnel reflection is caused by abrupt change of refractive index of optical fiber end face or fault point. Loss distribution and joint loss can be determined by observing Rayleigh backscattered light intensity change, and breakpoint and fault point can be determined by observing Fresnel reflection.

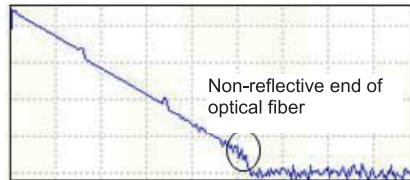
2 Event point type description

The event points on the curve of measured fiber can be divided into reflection event points and non-reflection event points.

The reflection event point is usually caused by a fixed connector or a fractured surface at the end of the optical fiber, representing a peak. It is shown in the figure below.



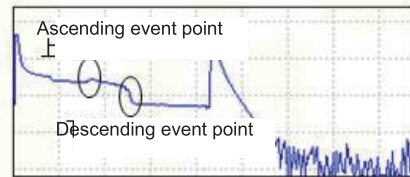
Reflection event point



Non-reflective end of optical fiber

Non-reflective events typically include :
(illustrated below)

- Descending event point
- Ascending event point
- Non-reflective end of optical fiber



Chapter IX Technical parameters

1 Main Functions

- 1) Test the length and loss of optical fiber or cable, and test the connection loss and reflection loss of connection points.
- 2) Automatic test function.
- 3) Test curve graphing function (iOLM).
- 4) USB port can be connected to the optical fiber end face detector.
- 5) Test waveform storage: Test waveform data and test conditions can be stored in the native memory or external USB flash disk /SD card. The storage format can be EI or BellCore GR196 standard format.
- 6) File copy function: The data files stored in this machine can be directly copied to the USB flash disk /SD card.
- 7) Remote control function, which can be used to set the test conditions of the

instrument through the computer, and test the loss distribution curve of the fiber.

2 General features and technical indicators

2.1 General features of optical time domain reflectometer

It is shown in Table. 9-1:

Table 9-1 General characteristics of mainframe of optical time domain reflectometer

Display screen	800×480, 7-inch TFT color LCD (standard distribution capacity touch screen, with optional resistance touch screen)
Electrical interface	USB port, Micro-USB port, SD card interface, and 10M/100M Ethernet interface
Power supply	AC/DC adapter: allowable range of input voltage: 100V ~ 242V (1.5A), allowable range of frequency: 50/60Hz; Output DC: 17V±3V (2A) Internal lithium battery: 11.1V, 6800mAh, 75.48Wh Battery working hours:8h
Environmental Requirements	Operating temperature: -10℃ ~ 50℃ (Battery: 5℃ ~ 40℃) Storage temperature: -40℃ ~ 70℃ (Battery: 5℃ ~ 40℃) Relative humidity: 5% ~ 95%, no condensation
Overall dimensions and weight	D×W×H: 252mm×180mm×55mm(including the OTDR module)
weight	1.8±0.2kg(including the OTDR module and lithium battery)
Interface language	Simplified Chinese, English, Russian, or Korean (contact the office for additional language support)

2.2 Main technical indicators of the OTDR module

Table 9-2 Technical features of OTDR module

Center wavelength (nm)	AVAILABLE IN 850, 1300, 1490, 1310, 1550, 1625 AND 1650 (SEE APPENDIX B FOR DETAILS)
Dynamic range (dB)	Up to 46 dB (see Appendix B for details)
Measuring range (km)	0.4, 0.8, 1.6, 3.2, 8, 16, 32, 64, 128, 256, and 512(single mode, and 1300nm for multimode) 0.4, 0.8, 1.6, 3.2, 8, 16 and 32(850nm for multimode)
Pulse width (ns)	3, 5, 10, 30, 80, 160, 320, 640, 1280, 5120, 10240, 20480(single mode) 3, 5, 10, 30, 80, 160, 320, 640 and 1280 (850nm for multimode)
Refractive index setting range	Adjust in the range of 1.00000 ~ 1.99999
Cable correction factor	Adjust in the range of 0.80000 ~ 1.00000

Linearity	0.03dB/dB
Loss resolution	0.001dB
Optical output connector	FC/UPC (standard configuration, Matching: LC/UPC、SC/UPC、ST/UPC)

2.3 VFL function (optional)

Table 9-3 Technical features of the VFL function

NAME	CONTENTS
Center wavelength (nm)	650nm±20nm
Output power mW	≥2mW (typical)
Operation mode	CW, 1Hz and 2Hz
Interface type	TOSA

2.4 Optical power meter function (optional)

Table 9-4 Technical features of broadband optical power meter

NAME	CONTENTS
Wavelength range	1200nm ~ 1650nm
Power range	-60dBm ~ 0dBm
Uncertainty of calibration point power test	Better than 0.22dB (-25dBm, CW, 1310/1550nm)
Uncertainty	±5% (-25dBm, CW)
Uncertainty of power measurement within the optical path	Better than ±1.5dB

2.5 Optical source function (optional)

Table 9-5 Technical features of the optical source function

NAME	CONTENTS
Output wavelength	Same with the operation wavelength of OTDR module
Output power	≥-5dBm(23°C±2°C)
Operation mode	CW, 270Hz, 1kHz and 2kHz

Appendix A Optical output port cleaning

1. During the use of the instrument, please note:

- The optical output ports must be kept clean, and the optical output ports should be cleaned regularly with anhydrous ethanol.
- After the instrument is used, please cover the dust cap and keep it clean.
- The flange connector of the light output port must be cleaned periodically. If the ceramic core in the flange is found to crack or crack, please timely replace the flange.

1.1 Function of cleaning optical fiber connector and optical output port:

- Because the fiber core is very small, dust and particles attached to the fiber connector and optical output port may cover part of the fiber core of the optical output end, leading to the performance degradation of the instrument.
- Dust and particles may cause wear of the end face of the optical fiber connector at the output end, which will reduce the accuracy and repeatability of the instrument test.

1.2 Follow the safety principles below before cleaning:

- Be sure to turn off the power supply when cleaning.
- Failure to follow the prescribed control, regulation, or operating procedures may result in dangerous radiation damage.
- When cleaning any optical interface, make sure the optical source is disabled.
- Do not look directly at any optical output port while the instrument is working to avoid eye damage.

1.3 Tools for cleaning optical output interface and connector

- You can use optical fiber cleaner, optical fiber cleaner rod and other tools to clean the optical output interface and connector.
- If the above professional tools are not available, please prepare the following:
Cotton wool ball, anhydrous ethanol, etc.

1.4 Steps to clean the optical output interface and connector

- Turn off the instrument power.
- Unscrew the flange cap completely.
- Gently pull out the flange.
- Clean the end face of the optical output connector and the flange connector with a cotton wool ball dipped in an appropriate amount of anhydrous ethanol.
- After cleaning, gently connect the flange to the optical output port, and then tighten the flange cap.

Appendix B Technical specification for each OTDR standard module

Model	Operating wavelength	Dynamic range ² (dB)	EDZ (m)	ADZ (m)
SS322T-1A	SM 1625nm (Filter)	39	0.5	3
SS322T-1B	SM 1650nm (Filter)	39		
SS322T-1MA	MM 850nm	27	0.7	5
SS322T-1MB	MM 1300nm	39		
SS322T-2A	SM 1310/1550nm	40 / 38	0.5	3
SS322T-2B	SM 1310/1550nm	45 / 43		
SS322T-2C	SM 1310/1550nm	48 / 45		
SS322T-2D	SM 1550/1625nm(Filter)	39 / 39		
SS322T-2E	SM 1550 /1650nm (Filter)	39 / 39		
SS322T-2F	SM 1310 /1550nm (Filter)	33 / 31		
SS322T-2G	SM 1310/1550nm	49/49		
SS322T-2MM	SM 850nm/1300nm	29/37	0.7	5
SS322T-3A	SM 1310/1490/1550nm	40/38/38	1.5	8
SS322T-3B	SM 1310/1550/1625nm(Filter, Dual optical port)	40/38/38		
SS322T-3C	SM 1310/1550/1625nm(Filter,Single optical port)	45/43/43	0.8	4
SS322T-3D	SM 1310/1550/1650nm(Filter, Single optical port)	45/43/43		
SS322T-3E	SM 1310/1550/1650nm(Filter, Dual optical port)	48/45/45	1.5	8
SS322T-3F	SM 1310/1550/1625nm(Filter, Dual optical port)	33/31/31		
SS322T-4A	SM 1310/1490/1550/1625nm(Filter, Dual optical port)	40/38/38/38	0.8	4
SS322T-4B	SM 1310/1490/1550/1650nm(Filter, Dual optical port)	40/38/38/38		
SS322T-4MA	SM 1310/1550nm+MM 850/1300nm	40/38/29/37	1.5	8
SS322T-4MB	SM 1310/1550nm+MM 850/1300nm	33/31/27/31		